



**(E)JES<sup>®</sup>**

Universal JES Management

# What is (E)JES?

(E)JES is a system management tool that gives you information to monitor, manage, and control your JES2 and/or JES3 z/OS® JESplex.

With (E)JES, you can:

- Control job processing (hold, release, cancel, and purge jobs).
- Monitor jobs while they are running.
- Browse jobs without printing.
- Control JESplex parameters, initiators, job classes, and job class groups.
- Control printers, punches, functional subsystems, and NJE devices.
- Control your JES SPOOL configuration.
- Monitor and control JES resources.
- Control WLM scheduling environments and resources.
- Control WLM enclaves and z/OS UNIX processes.
- Control the z/OS Health Checker.
- Issue system commands.

## (E)JES Entry Panel

```
Jobs Resources Devices Tools Filter View Options Help
2014/10/24 (2014.297) (E)JES Entry Panel MVSA0/SA0 V5R4.0 12:26
Command ==>
Default Command ==>

Job Names/Nums ==> ==> ==> ==>
Owner IDs ==> ==> ==> ==>
Origins ==> ==> ==> ==>
Destinations ==> ==> ==> ==>
Job Classes ==>
Sysout Classes ==>
Level of Detail ==> MIN (MIN or MAX)
Default Sort ==> STD (STD,NAME,NUM,PTY,TIME)
Default SortDir ==> A (Ascending or Descending)
Dynamic Update ==> YES (YES or NO)
Display Jobs ==> YES (YES or NO)
Display STCs ==> YES (YES or NO)
Display TSUs ==> YES (YES or NO)
Display ATXs ==> YES (YES or NO)

F1=Help F3=Exit F6=Info F7=Backward F8=Forward F9=Swap
F10=Actions F12=Cancel
```

(E)JES consists of panels that provide immediate and current information about jobs, printers, queues, and resources in a z/OS JESplex. With (E)JES, you can easily access and modify all attributes for jobs, started tasks, TSO users, APPC/MVS transaction jobs, z/OS UNIX processes running anywhere in your JESplex. Simple commands and rapid accessibility not only save you time, but also make interaction with your JES subsystems easy.

*Status Display*

Jobs	Resources	Devices	Tools	Filter	View	Options	Help				
STATUS	3,499S	126X	3,295W	78H	0T	93,147,812 Records	Row 65 of 3499				
Command	====>						Scroll ==> CSR				
Cmd	RowNum	JobName	JID	Status	Proces	C	JP	Pos	MaxComp	Records	Pages
65		PSCODEST	JOB95783	H-OPER	OUTSER		1		CC 0000	4	0
66		TIVSMPRT	JOB96646	W-OUTPUT	OUTSER	A	2		CC 0000	2,387	0
67		TIVSMPRT	JOB99039	W-OUTPUT	OUTSER	A	2		CC 0000	2,393	0
68		ASMENVT2	JOB99656	W-OUTPUT	OUTSER		1		AB S0C1	213	0
69		ASMENVT2	J0100412	W-OUTPUT	OUTSER				ABEND S0C1		
70		TIVSMPRT	J0101002	W-OUTPUT	OUTSER				The job terminated because an operation exception occurred.		
71		TIVSMPRT	J0103191	W-OUTPUT	OUTSER						
72		TIVSMPRT	J0105170	W-OUTPUT	OUTSER						
73		TIVSMPRT	J0107596	W-OUTPUT	OUTSER	A	2		CC 0000	2,402	0
74		TIVSMPRT	J0109363	W-OUTPUT	OUTSER	A	2		CC 0000	2,397	0
75		TIVSMPRT	J0111174	W-OUTPUT	OUTSER	A	2		CC 0000	2,397	0
76		TIVSMPRT	J0113396	W-OUTPUT	OUTSER	A	2		CC 0000	2,403	0
77		TIVSMPRT	J0115938	W-OUTPUT	OUTSER	A	2		CC 0000	2,406	0
78		TIVSMPRT	J0118243	W-OUTPUT	OUTSER	A	2		CC 0000	2,402	0
79		TIVSMPRT	J0120524	W-OUTPUT	OUTSER	A	2		CC 0000	2,408	0
80		TIVSMPRT	J0122460	W-OUTPUT	OUTSER	A	2		CC 0000	2,404	0
F1=Help	F2=Split	F3=Exit	F4=Return	F5=RFind	F6=Book	F7=Up					
F8=Down	F9=Swap	F10=Left	F11=Right	F12=Cancel							



## Benefits of Using (E)JES

---

### Improved Job Management

(E)JES lets you easily manage jobs in your spool. It gives immediate, up-to-date information, such as:

- The status, class, priority, date, and time of a job
- All jobs on a queue, such as input, hold, or output
- Job details no matter where it is in the JESplex
- Reasons a job is delayed
- Output from a job as it is created no matter where the job is running in the JESplex

### Improved Output Management

(E)JES displays detailed information about output that is ready to be printed, including:

- The total number of lines to be printed
- Classes the output is assigned to
- Forms needed for printing
- Date the output was created

### Improved Resource Management

(E)JES provides an effective way to manage resources.

- Control and manage JESplex parameters, JES-managed initiators (JES2), job classes, and job class groups (JES3)
- Control NJE nodes
- Control and manage WLM resources
- Control WLM enclaves and z/OS UNIX processes
- Control the z/OS Health Checker
- Control and manage system requests
- Reduce problem management time
- Issue system commands

# Benefits of Using (E)JES

---

## Improved User Access Control

You can tailor (E)JES to meet the needs of your users and your security requirements. You can control:

- Who can use (E)JES
- Which users can issue (E)JES control commands
- Which users can issue system commands
- For which jobs users can issue commands
- Which columns to display on panels
- Which jobs and output to display on panels

You can implement these controls internally or through the SAF and an external program such as RACF®.

## Improved Device Control

With (E)JES, you have a single interface to some of the most important devices on your system:

- Local and remote printers and punches
- Spool partitions and volumes
- JES3 functional subsystems

## Improved Automation of Routine Tasks

The (E)JES Application Programming Interface (API) and companion REXX and Java APIs make powerful (E)JES functionality available to programs, allowing users to:

- Create programs to perform routine tasks
- Use installation-written applications to obtain system information.
- Use System REXX to access “smart” tools and commands without TSO/E access.

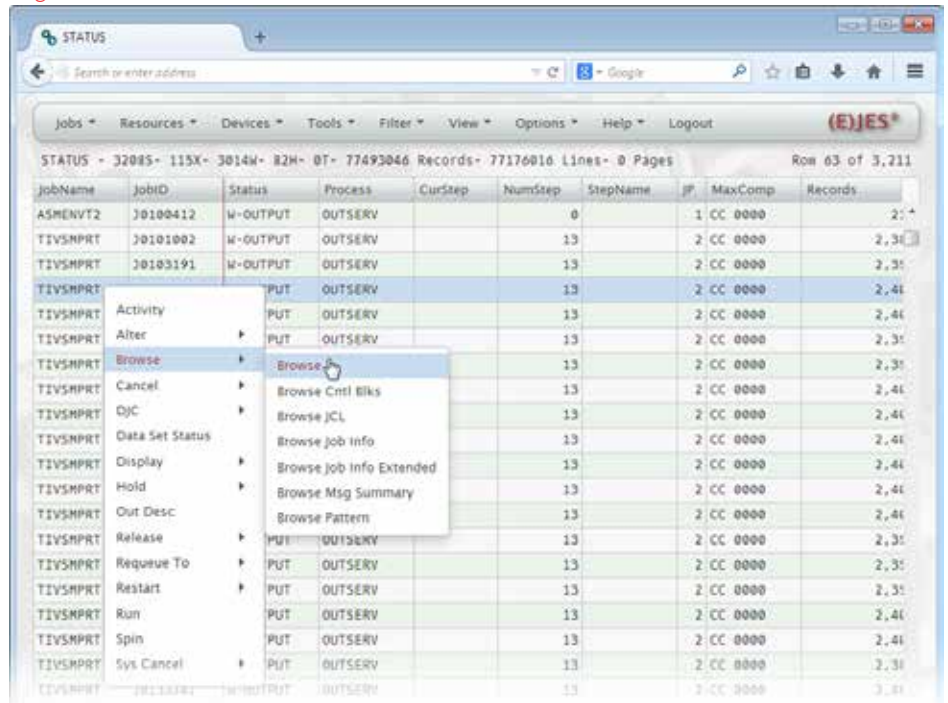




# (E)JES Web

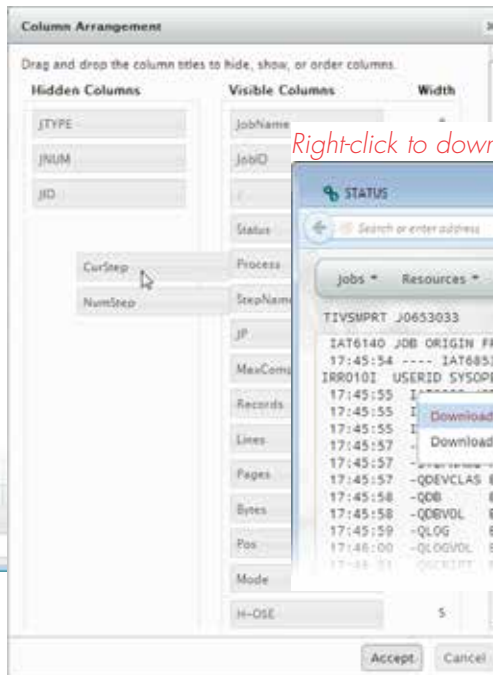
(E)JES Web is a browser-based interface to (E)JES implemented in Java. (E)JES Web has much of the same functionality as (E)JES. Through menu bars, context menus, and dialog boxes, you can monitor, manage, and control your z/OS JESplex.

*Right-click a line item to access commands.*

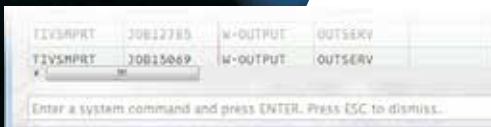
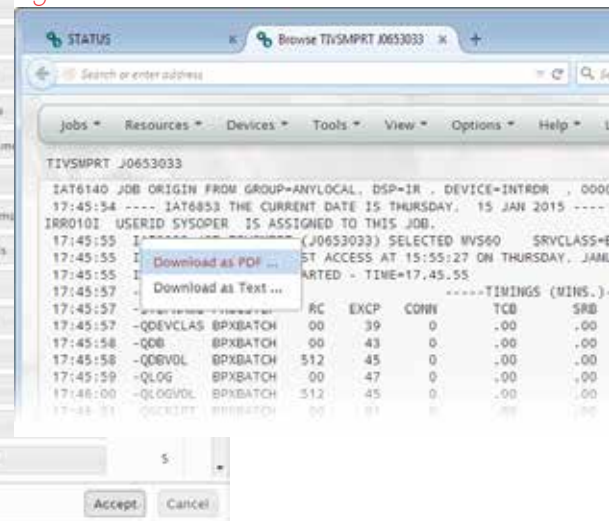


*Access dialog boxes via drop-down menus.*

*Drag and drop to arrange columns.*



*Right-click to download a data set as PDF or text.*



*Type a slash to enter a system command.*

(E)JES Web supports all modern browsers. This includes Google Chrome, Firefox, Opera, Safari, and Internet Explorer 8 or above.

## About Us

---

Phoenix Software International was formed in 1979 and is one of the world's leading systems software development companies. The company offers a suite of software utilities operating on the IBM mainframe platform and personal computers.

Visit us at [www.phoenixsoftware.com](http://www.phoenixsoftware.com) to learn more about our products and [download a free trial of \(E\)JES](#).

PHOENIX SOFTWARE INTERNATIONAL  
[www.phoenixsoftware.com](http://www.phoenixsoftware.com)  
[sales@phoenixsoftware.com](mailto:sales@phoenixsoftware.com)  
(310) 338-0400  
FAX (310) 338-0801

The "P" logo, Phoenix Software International, and (E)JES are registered trademarks of Phoenix Software International.

IBM, RACF, and z/OS are registered trademarks of the International Business Machines Corporation.

All other trademarks are acknowledged and respected.

© Copyright 2004-2014 Phoenix Software International, Inc.

